

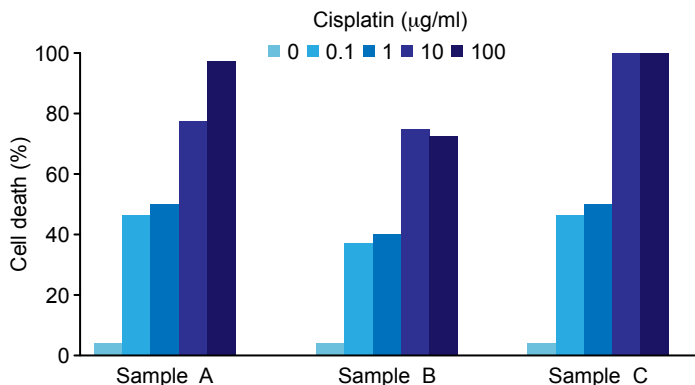
Black and white:

Best for journals that prefer to minimize color or when you want to avoid charges for color printing. If your chosen journal requires style A or B, we will format your figures using their preferred style regardless of your specific selection.



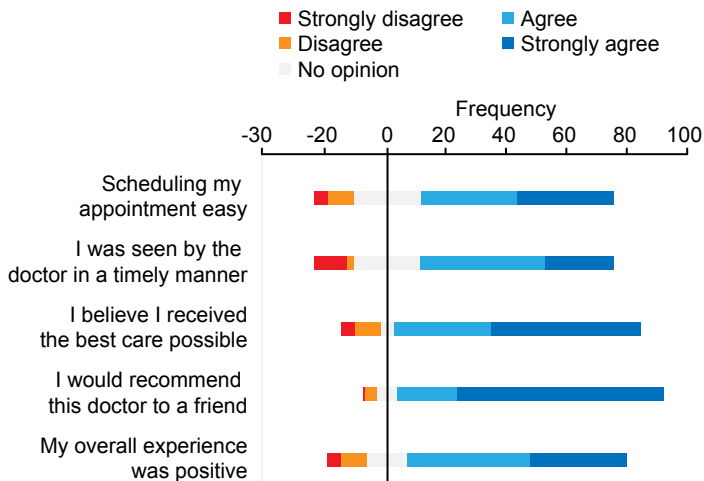
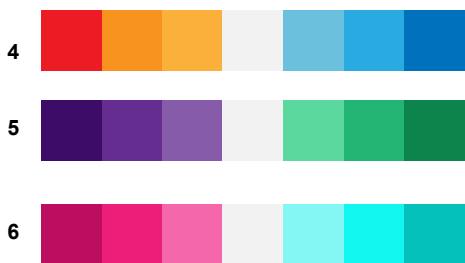
Sequential color scheme:

Best used for proportional data or data within the same category but varying in a single variable. (ex: same treatment, varying dosage)



Diverging color scheme:

Best used for data that vary from a specific mean or neutral point. (ex: departure from average temperature, satisfaction surveys)



Qualitative color scheme:

Best used for comparing distinct categories of data. (ex: comparison of 5 different treatment groups)

